

ABSTRACT

For Adventist Health System, Creation Health is the central Adventist health message of the organization and the hospitals it manages. However, the data they store relating to Creation Health has long been secluded in a solitary, rarely-visited website. My project was to take that data and make it available to the current, widely-used consumer-facing application at Adventist Health System, Hello Well.

INTRODUCTION

Adventist Health System is a non-profit healthcare organization based in Orlando, FL. Creation Health is the location of information and resources regarding Adventist Health System's central health message, which is a message with an emphasis on Christian health ideals and a holistic view of health. These ideals are something both the company and I strongly believe in and hold central to the work of the healthcare company.

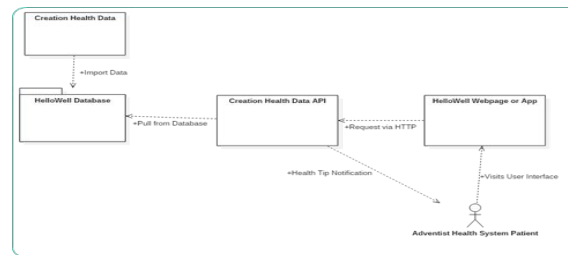
HelloWell, the most prominent consumer-facing application for Adventist Health System, which gives consumers of the AHS healthcare system access to their medical records, ability to manage family members, and functionality to find care and request appointments.

The goal that I set out to accomplish was to migrate and make available the data located in this Creation Health system and make it available to Hello Well.

PROJECT IMPLEMENTATION

There were two main components to the project that I completed this year were database design and implementation, and API development.

First of all, I needed a way to store the data that was current located in the Creation Health website. This information was stored in csv format previously, and I needed to move it over to a database. I was able to extend the Hello Well database, which uses MySQL and InnoDB, in order to store this data and later make it accessible. The implementation of this database primarily focused on the storage of health information and user subscriptions to that information.



The other aspect to the project was the API development. Once the information was able to be stored in the Hello Well Database, I worked within the existing Hello Well API to add models, services, and endpoints in order to manage the newly acquired data. The functionality of this system was focused on the ability to retrieve Creation Health data and also to allow users to subscribe to receive this data at regular intervals via email.

creation-health : Creation Health Controller		Show/Hide	List Operations	Expand Operations
GET	/api/v1/creationhealth/tip/all			getAllTips
GET	/api/v1/creationhealth/tip/category/{health_tip_cat}			getTipByCategory
GET	/api/v1/creationhealth/tip/{health_tip_id}			getTipById
GET	/api/v1/creationhealth/tipOfTheDay			getTipOfTheDay
GET	/api/v1/creationhealth/{phrId}/subscription			getSubscription
POST	/api/v1/creationhealth/{phrId}/subscription/add			addSubscription
POST	/api/v1/creationhealth/{phrId}/subscription/edit			editSubscription

CONCLUSION

Overall, I was able to deliver a tested API and database integration for the Creation Health data that was proposed to me as a project idea. Users can subscribe to receive this data at regular intervals, and the API continually hosts and exposes the data. Unit test integration ensures that the additions that I've made remain functional and can be easily verified and maintained

SUMMARY

At the center of a healthcare organization is their vision for holistic well-being, and for Adventist Health System that vision is termed Creation Health. Through my Senior Project I was able to help the organization take a step towards making this vision clear to everyone who uses their services. The addition of Creation Health data to the consumer-facing application of AHS is a step forward in helping them to further improve the well-being of every patient through this Adventist Health Message.

REFERENCES

Creation Health

- <http://creationhealth.com/>

Hello Well

- <https://hellowell.com/>